




Herbo Nutra



***NATURAL INGREDIENTS
SOLUTIONS PROVIDER***

 **9911016820, 9555302055,
8287599184, 8882112116**

 info@herbonutra.com /  www.herbonutra.biz

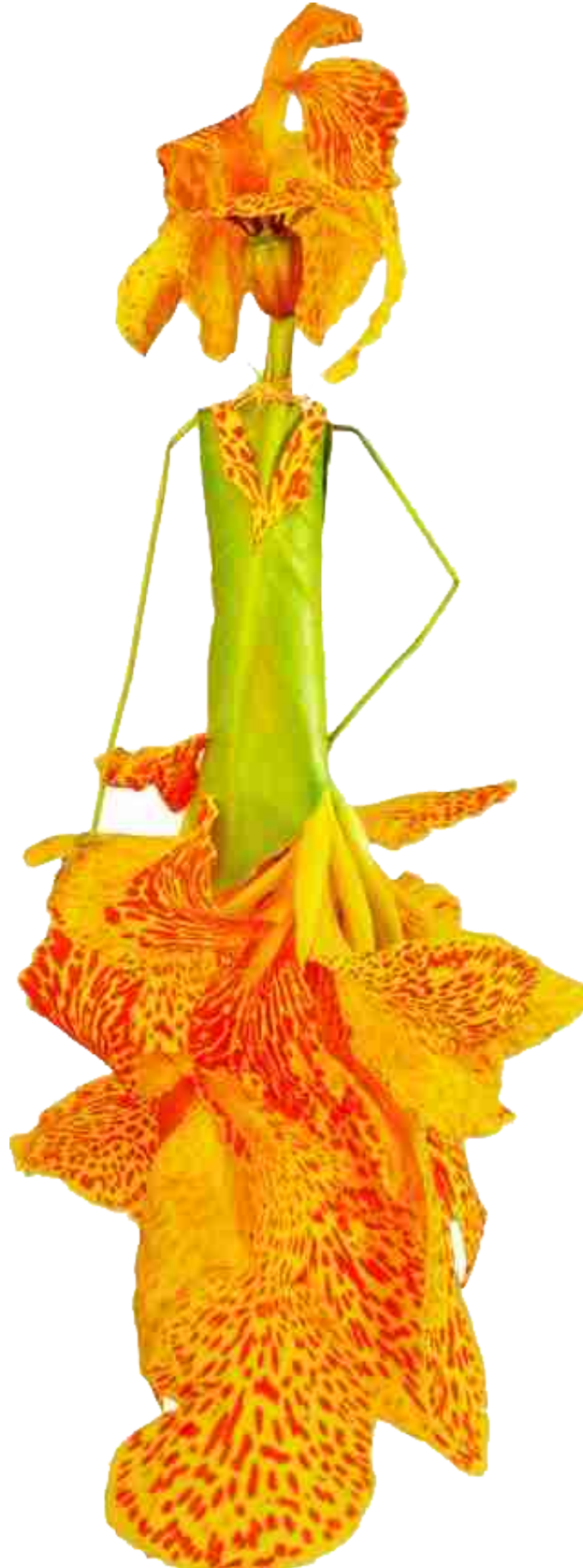
A-2/66, UPSIDC SITE 5, KASNA SURAJPUR INDUSTRIAL AREA,
GAUTAM BUDH NAGAR, GREATER NOIDA UTTAR PRADESH – 201308, INDIA

ABOUT US

Herbo Nutra is a leading manufacturer, exporter of Herbal extracts, Nutraceutical raw materials, Essential oils, and Aromatherapy oils, we are an innovative a dynamic goal seeking company committed to helping our clients and maintain rank in their existing product lines developing product lines in the nutraceutical business.

We have advanced extraction, isolation, purification, synthesis, fermentation equipment and technology with rich production experience and strict quality control system, and we have built a perfect sale service system, products are exported to Europe, North and South America, the Middle East and Asia Pacific and other five continents and scale the forefront in the nation, won good international reputation.

If you're looking for the world's leading manufacturer of premium quality Herbal extracts, functional food ingredients, Nutraceutical raw materials, Essential oils, Aromatherapy oils, you've found it in Herbo Nutra. At Herbo Nutra we are always committed to giving our customers the reliable products and services that they expect and deserve. Our renowned line of wholesale ingredients includes: - Functional food ingredients. – Nutraceutical raw materials. – World class Herbal Extracts. – Essential & Aromatherapy oils. Dietary Supplements.



“ Adorn your Health with HERBAL ”



We believe that quality is the life of our company. We manufacture our products in strict accordance with quality management system during the whole entire production process.

Reliable quality and excellent service is our commitment to every customer, We firmly believe our customer's success is our success. At Herbo Nutra we are always committed to giving our customers the reliable products and services that they expect and deserve.



OUR PRODUCT LIST

Berberine

Acacia Catechu (Khadira) Extract - 10:1

Acai Berry Extract 10:1 , Vitamin C

Acerola Extract 10:1

Achyranthes Aspera Extract (Apamarg)-10:1

Acorus Calamus Extract 10:1

Ajwain Extract (Trachyspermum Ammi) - 10:1

Alfa Alfa Extract (Medicago Sativa) 10:1

Allium Cepa Extract 10:1

Aloe Vera Extract 10:1

Alpinia Galanga Extract - 10:1

American Ginseng Extract - 10% Panaxoide By HPLC

Amla Extract (Phyllanthus Emblica) 10:1

Anacyclus Pyrethrum Extract (Akarkara) - 4:1

Apple Cider Powder - 30% Acitic Acid

Areca Catechu Extract (Puga) - 10:1

Arjuna Extract - 10:1

Artemisa Extract - 10:1

Artichoke Extract (Cynara Scolymus) 2.5 % Cynarin

Ashoka Extract (Saraca Indica) - 10:1

Ashwagandha Extract (Withania Somnifera) 2.5% Withanolide By Gravymetry

Asparagus Racemosus Extract (Shatavari) - 10:1

Astaxanthin Extract - 10%

Astercantha Longifolia Extract - 10:1

Astragalus Extract 10:1

Avacado Soyabean Unsaponified (ASU) 30%

Avena Sativa Extract 10:1

Babool Extract - 10:1

Bacopa Monnieri Extract - 10:1

Bamboo Extract 70% Silica

Banaba Extract - 1% Corosolic Acid By HPLC

Barley Grass Extract- 10:1

Basil Extract (Ocimum Sanctum) - 10:1

Bear Berry Extract 10:1

Beet Root Extract - 10:1

Behra (Embelia Belerica)-10:1

Belgiri Extract (Aegle Marmelos) - 10:1

Berberin HCL 50%

Berberis Asiatica Extract (Daruharidra) - 10:1

Bergenia Ligulata (Pashanbhed) Extract - 10:1

Beta Carotene Extract 10%

Beta Sitosterol Extract - 50% By GC

Bijora Bada Nimbu Extract 10:1

Bill Berry Extract - 25% Anthocyanidins

Bitter Apricot Kernel Extract - 10:1

Black Berry Extract - 10:1

Black Cohos Extract 2.5 % Triterpine

Black Cumin Extract - 4:1

Black Current Extract 10:1

Black Tea Extract - 30% Theaflavon

Black Wull Nut Hull Extract 10:1

Blue Berry Extract 10:1

Boswellia Aflapin Extract -30% AKBA By HPLC

Boswellia Extract (Shallaki) 65% Boswellic Acid

Brahmi Extract- 10:1

Broccoli Extract 10:1





Korean Ginseng

Bromlein Powder / Pineapple - 1200/2400/2600 GDU

Burdock Root Extract 10:1

Butcher's-Broom Extract- 10:1

Butterbur Extract - 10:1

Cacao Fruit Powder - 10:1

Caffeine Extract 95% By HPLC

Camellia Oleifera Extract 10:1

Camu Camu Extract 10:1

Capsicum Extract - 10:1

Caralluma Fimbriata Extract 10:1

Carica Papaya Leaf Extract 10:1

Carrot Extract - 10:1

Cascara Sagrada Bark Extract - 10:1

Cassia Fistula Extract- 10:1

Cassia Occidentalis Extract-10:1

Cat's Claw Extract - 3% Oxindole Alkaloids

Catuba Bark Extract 10:1

Cayenne Pepper Extract 10:1

Celastrus Paniculatus Extract 10:1

Cellery Seed Extract 10:1

Centella Asiatica Extract (Gotu Kola) 10:1

Chaga Mashroom Extract-20% Polysacchride

Chamomile Extract 10:1

Chia Seed Extract - 10:1

Chick Pea Extract- 10:1

Chicory Pulp Extract 10:1

Chinese Skullcap Root Extract- 10:1 / 1% Flavonid By HPLC

Chitrakmool Extract (Plumbago Indica) - 10:1

Chlorella Extract 10:1

Cinnamon Extract 20% Polyphenol By UV

Cissus Quadrangularis Extract 2.5 % Kitosteron

Citrus Bigarardia Extract 10:1

Citrus Lemon Fruit Extract 10:1

Coenzyme Q10

Coleus Forskohlilii 20%

Colostrum Dry Powder- 20% Igg

Comfrey Extract (Symphytum Officinale) - 10:1

Cordyceps Sinensis Extract- 10:1 / 10% Polysaccharide

Cornsilk Extract-10:1

Cranberry Extract 25 % PAC

Crataegus Sp. Extract 10:1

Cucumber Extract - 10:1

Cuminum Cyminum (Jeera) Extract - 10:1

Curculigo Orchioides Extract (Kali Musli)- 10:1

Curcuma Longa Extract 10% Curcumin

Curcumin 95% Curcuminoids By HPLC

Cyperus Rotundus Extract (Musta/ Nagarmotha) - 10:1

D Mannose - 99%

D Ribose-99%

Damiana Extract (Turnera Diffusa) 10:1

Dandelion Extract (Taraxacum Officinale) 10:1

Devadaru (Cedrus Deodara) Extract- 10:1

Devil's Claw Extract (Harpagophytum) 10:1 / 3% Herpagoside By HPLC

DGL Licorice-NMT 3 % W/W Glycyrrhizinic Acid By HPLC

DHA 10 % Veg Powder

Diosmin- 90%

Dong Quai Ext (Angelica Sinensis)-10:1 / 15% Saponin

Echinacea Extract 10:1

Eclipta Prostrata Extract (Bhringraj)- 10:1

elderberry Extract (Sambucus Nigra) 10:1

Ellagic Acid Pomegrante Extract- 20% By Elagic Acid By UV / 40%

Euphorbia Hirta Extract 10:1

Evening Primrose Oil Powder - 10:1



HESPERIDINE



Acai Berry

- Hawthorn Berry Extract 10:1
- Hemidesmus Indicus (Anantmoool) Extract- 10:1
- Hesperidin- 90%
- Hibicus Extract (Gudhal)- 10:1
- Hops Extract (Humulus Lupulus)- 10:1
- Horny Goat Weed Extract 10:1

Eyebright Leaves Extract- 10:1	Horse Chest Nut Extract 20% Aescin By UV
Fennel Seed Extract- 10:101*8	Horsetail Extract 22% Silica
Fenugreek Extract (Mehti) 40 % Saponin	Huperzia Serrate Ext-1% Huperzine A
Fever Few Extract 10:1	Hygrophila Auriculata Extract- 10:1
Flax Seeds Extract- 10:1	Hypericum Perforatum Ext (St John's Wort) - 0.3 % Hypericine By HPLC
Foti Extract- 10:1	Ilex Paraguariensis Leaf/ Yarpa Mate Extract-10:1
Ganoderma Lucidum Extract (Red Rishi Mushroom Ext)-20% Polysacchride	Ivy Leaf Extract 10:1
Garcinia Cambogia Extract (Vrikshamla) 50 %	Jatamansi Extract- 4:1
Garlic Extract (Allium Sativum) - 1% Allicin	Java Tea – Orthosiphon Extract - 10:1
Gaurana Seed Extract 10 % Caffeine	Juniperberry Extract - 2% Flavonoids
Giant Knotweed Powder-10:1	Justicia Adhatoda (Vasaka) Extract- 10:1
Ginger Extract (Zingiber Officinale) 5% Gingerol / 10:1	Kacip Fatimah Leaf Extract-10:1
Gingko Biloba Extract 24% Gingko Flavone / 10:1	Kakar Singhi Extract (Pistacia Integerrima)- 10:1
Ginseng Extract 10% / 20% Ginsenoside By UV	Kala Jeera (Bunium Bulbocastanum)-10:1
Glucomanan Extract Powder (Konjac)-95%	
Glycyrrhiza Glabra Extract 10:1	Kalmegh Dry Extract (Andrographis Paniculata) 10:1
Gmelina Arborea (Gambhari) Extract- 10:1	Kapikacchu Extract- 10:1
Gojiberry Extract 20 % Polysacchride	Karela Extract (Momordica Charantia)-10:1
Goldenseal Extract 10:1	Kava Kava Extract - 10:1
Grape Fruit Extract Powder- 45% Flavone By HPLC	Kelp Extract / Bladder Wrack - 10:1
Grape Leaf Extract-1.5% Flavonoids By UV	Khellin Extract- 10:1
Grape Seed Extract 95 % OPC	Kiwi Seed Extract 4:1
Graviola Extract 10:1	Korean Red Ginseng Extract- 10% Gensenoside By UV
Green Apple Extract 10:1	Kudzu Root Extract 40 % Isoflavone
Green Coffea Bean Extract 50 % Chlorogenic Acid	Kultha Extract (Dolichos Biflorus)-10:1
Green Oat Extract- 10:1	Kutki Extract (Picrorhiza Kurrooa)-8% Kutkin By Gravymetry
Green Pea Extract (Pisum Sativum)- 10:1	L Arginine-99%
Green Tea Extract (Camellia Sinesis) 50 % & 90 %	L Cysteine-99%
Griffiona Seed Extract (5 HTP) - 99%	
Guava Extract (Psidium Guajava)- 10:1	
Guduchi Extract (Tinospora Codrifolia, Giloy)- 10:1	
Guggul Extract (Commiphora Wightii) 2.5 % Guggulsterone	
Gymnema Extract 25 % Gymnemic Acid	



L Glutathion Reduced 99%

L Theanine- 98%

Lemon Balm Extract (Leaf Ext)- 10:1 / Rosmarinic Acid NLT @ 3%

Lemon Extract 10:1

Leptadenia Reticulate (Jivanti) Extract- 10:1

Lingonberry Extract- 10:1

Lodhra (Symplocos Racemosa)-10:1

Lutein / Marigold Flower Ext-10% Lutein

Lycopene- 10% & 5%

Maca Root Extract 15 % Sterol / 10:1

Magnolia Officinalis Extract-10:1

Maitake Mushroom Powder-10:1

Makoi Extract (Solanum Nigrum)- 10:1

Mamejava Extract- 10:1

Mangosteen Extract 10 % Xanthon

Manjestga Extract / Rubia Cordifolia-10:1

Maquiberry (Aristotelia Chilensis)-10:1

Marshmallow Extract / Althea Officinalis- 10:1

MCT Oil Powder

Melatonin-99%

Melissa Leaf Extract 10:1

Milk Thistle Extract (Silymarin Extract)-80 % Silymarin By UV

Mongifera Indica Extract- 10:1

Moringa Leaf Extract 10:1

Motherwort Extract 10:1

Mucuna Puranis Extract 10 % L Dopa

Muira Puama Extract 10:1

Mulberry Leaf Extract 1 % DNJ

Mulethi / Licorice Extract-10:1 / 20% Saponin

Murraya Koenigii(Curry Leaf Extract) -10:1

Mustard Seed Extract - 10:1

Myristica Fragrans Extract (Jaiphal, Nutmeg)- 4:1

Nano Curcumin 10%

Neem Extract (Azadirachta Indica) 10:1

Ganoderma

Nettle Root Extract 10:1

Nigella Sativa Extract (Kalonji)

Noni Extract 10:1, 40 % Saponin

Oat Straw Extract-10:1

Olive Leaf Extract 20 % Oleuperon

Omega 3 Veg Powder

Onion Ext 10:1

Opuntia Ficus Indica Extract (Prickly Pear)10:1

Orange Peel Extract-10:1

Palak Extract-10:1

Palash Extract (Butea Monosperma) / Tesu Phool-10:1

Panax Ginseng Extract - 20% Ginsenoside By UV

Passion Flower Extract 10;1

Pea Protein Isolate Extract-90%

Peach Extract 10:1

Pepper Mint Extract 10:1

Phosphatidylcholine- 30%

Phyllanthus Niruri (Bhumi Amalaki) Extract-10:1

Phytosterols Extract- 95% Phytosterol

Pine Bark Extract 95% Pycnogenol By UV

Pipali Extract-10:1

Piper Nigrum Extract (Black Pepper) -5% Piperine By HPLC

Piperine Powder 45% & 95%

Polypodium Leucotomus Extract 10:1

Pomegranate Extract (Punica Granatum) - 10:1

Primula Veris Extract (Cowslip)- 10:1

Propolis Extract 10% Flavnoidn

Prunus Domestica Extract-10:1

Pterocarpus Marsupium (Vijaysar) Extract-10:1

Pueraria Mirifica Extract 10:1

Pumpkin Seed 10:1

Punarnava Extract (Boerhavia Diffusa) 10:1

Pushkermool Extract 10:1

Omega 3



Aloevera

Sesbania Grandiflora Extract 10:1

Shankhapushapi Extract /Convolvulus Pluricaulis-10:1

Shikhakai Extract-10:1

Shilajeet Extract (Asphaltum)-40% Fulvic Acid

Shitake Mushroom Extract - 10:1

Shudh Kuchla Extract-10:1

Pygeum Africanum Extract-10:1

Pygeum Bark Extract 10:1

Quercetin Powder 95 %

Rasna (Pluchea Lanceolata) Extract-5:1

Red Clover Extract 10 % Isoflavon

Red Raspberry Extract 10 % Raspberry Kitone

Red Spinach Extract-10:1

Red Wine Extract 10:1

Red Yeast Rice Extract - 10:1

Reeta Ext (Sapindus Mukorossi)-10:1

Reservetrol 99 % From Grape Skin

Rhodiola Rosea Extract 10:1

Rhubarb Root Extract-10:1

Ricinus Communis Extract 10:1

Rose Petals Powder Extract 10:1

Rosehip Extract 10% & 20 %

Rosemary Extract (Rosmarinus Officinalis) 10:1

Rutin From Fruit Peels 95%

Saccharum Officinalis Extract 10:1

Safed Musli Extract (Chlorophytum Borivilianum) 40 % Saponin

Salacia Reticulata (Saptarangi Extract)-10:1

Salix Alba Extract 10:1

Salvia Officinalis Extract / Sage-10:1

Sarpagandha Extract-4:1

Sarpunkha (Tephrosia Purpurea)-10:1

Sarsaparilla Extract (Hemidesmus Indicus)-10:1

Saunf (Foeniculum Vulgare)-10:1

Saw Palmetto Extract 25 % Fatty Acid / 45%

Schisandra Berry Extract 10:1

Scutellaria Baicalensis Extract (Baikal)-10:1

Seabuckthorn Extract Powder - 10:1

Seabuckthorn Pulp 10:1

Seena Extract-10% Sennoside By HPLC

Siberian Ginseng Extract - 0.8% Eleutherside By HPLC

Slippery Elm Extract 10:1

Soapnut Extract 10:1

Solanum Xanthocarpum Extract (Kantkari)-10:1

Soya Isoflavon Extract 40 %

Sphaeranthus Indicus. (Gorakhmundi Extract)-10:1 / 5% Saponin By Gravimetry

Spirulina 60% Protein

Stevia Extract 90 % Stevioside

Strawberry Extract-10:1

Syzygium Cumini (Jamun) Extract-10:1

Tart Cherry Ext-10:1

Tea Tree Extract-10:1

Terminala Arjuna Extract-25% Tannil

Terminalia Bellirica Extract (Bibhitaki)-20% Tannin By Gravymetry

Terminalia Chebula Extract (Haritaki)-20% Tannin By Gravymetry

Thymus Extract-10:1

Tinospora Cardifolia Extract 5 % Bitter

Tongkat Ali Extract 100:1

Tribulus Terristris Extract 40 % Saponin

Triphla Powder Extract-30% Tannin By Gravymetry

Tulsi Extract (Ocimum Tenuiflorum)-10:1

Turmeric Extract-10:1

Urtica Sp. Extract-10:1

Uva Ursi Extract 10:1

Vaccinium Myrtillus Extract 25% Anthocyonidin

Vadarikand Extract 10:1

Vaividang Extract (Embelia Ribes)-10:1

Valeriana Wallichii Extract (Tagar)-10:1

MORINGA

Varuna Extract (Crataeva Nurvala)-10:1

Velvet Bean Extract 10% L Dopa

Vitex Agnus Extract 0.5 % Agnuside

Vitex Negundo Extract (Nirgundi)-10:1

Wheat Grass Extract Powder 10:1

Whitch Hazzel Extract-10:1

White Kidney Bean Extract 10:1

White Willow Bark Extract 10 %

Wild Rose Extract-10:1

Wild Yam Extract 6% Diosgenin

Willow Bark Extract 10:1

Wormwood Leaf Extract Powder 10:1

Yarrow Extract 10:1

Yavakshara- Barley Extract (Hordeum Vulgarae)- 10:1

Yeast Extract-10:1

Yohimbe Extract 10% Yohambe HCL

Zanthoxylam Extract 10:1

Our Accreditation



Cranberry






Herbo Nutra

Herbo Nutra

A-2/66, UPSIDC SITE 5, KASNA SURAJPUR INDUSTRIAL AREA,
GAUTAM BUDH NAGAR, GREATER NOIDA UTTAR PRADESH – 201308, INDIA

 9911016820, 9555302055,
8287599184, 8882112116

 herbonutra@gmail.com

 www.herbonutra.com